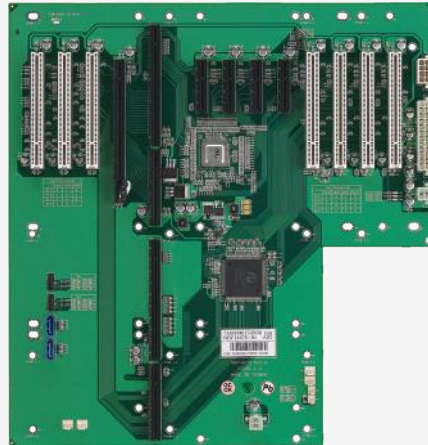


NBP 14670

PICMG 1.3 13-slot Backplane for 4U Chassis
with 1 x SHB Slot, 1 x PCIe x16, 4 x PCIe x4, 7 x PCI



Main Features

- Greater powers delivery capability, supports high performance system host board and add-on card
- Follows PICMG 1.3 mount holes and compatible with standard 4U chassis
- Supports 1 x PCIe x16, 4 x PCIe x4, 7 x PCI
- Power connector supports
 - 24 pin ATX power connector
 - 8 pin AUX standard power connector
 - Support $\pm 12/5V/3.3V$ power connector
 - Compliance with PICMG 1.3 full-size SBC

Specifications

System Architecture

- 13-slot backplane

Dimensions

- 317mm (L) x 328mm (W) (12.4" x 12.9")

Slots

- 1 x PICMG 1.3 (SHB slot)
- 1 x PCIe x16
- 4 x PCIe x4
- 7 x PCI

I/O Interface

- USB 2.0 with 2 x 10 pin-headers
- 2 x SATA
- 1 x 3 pin fan
- connector for power LED/reset button connector

Power Input

- ATX standard power connector: BTX24-pin
- Support +12V standard power connector: ATX +12V 4pin x 2

Power Output

- 1 x 4pin 12V AUX power connector to SBC/SHB

Environment

- Operating temperature: 0°C to 60°C
- Storage temperature: -20°C to 80°C
- Relative humidity:
- Operating 10% to 90%, non-condensing
- Non-operating 5% to 95%, non-condensing

Certifications

- CE approval
- FCC Class A

Ordering Information

- **NBP14670 (P/N: 79N0146701X00) RoHS Compliant**

PICMG 1.3 13-slot backplane for 4U chassis, 1 x SHB slot, 1 x PCIe x16, 4 x PCIe x4, 7 x PCI

Dimension Drawing

